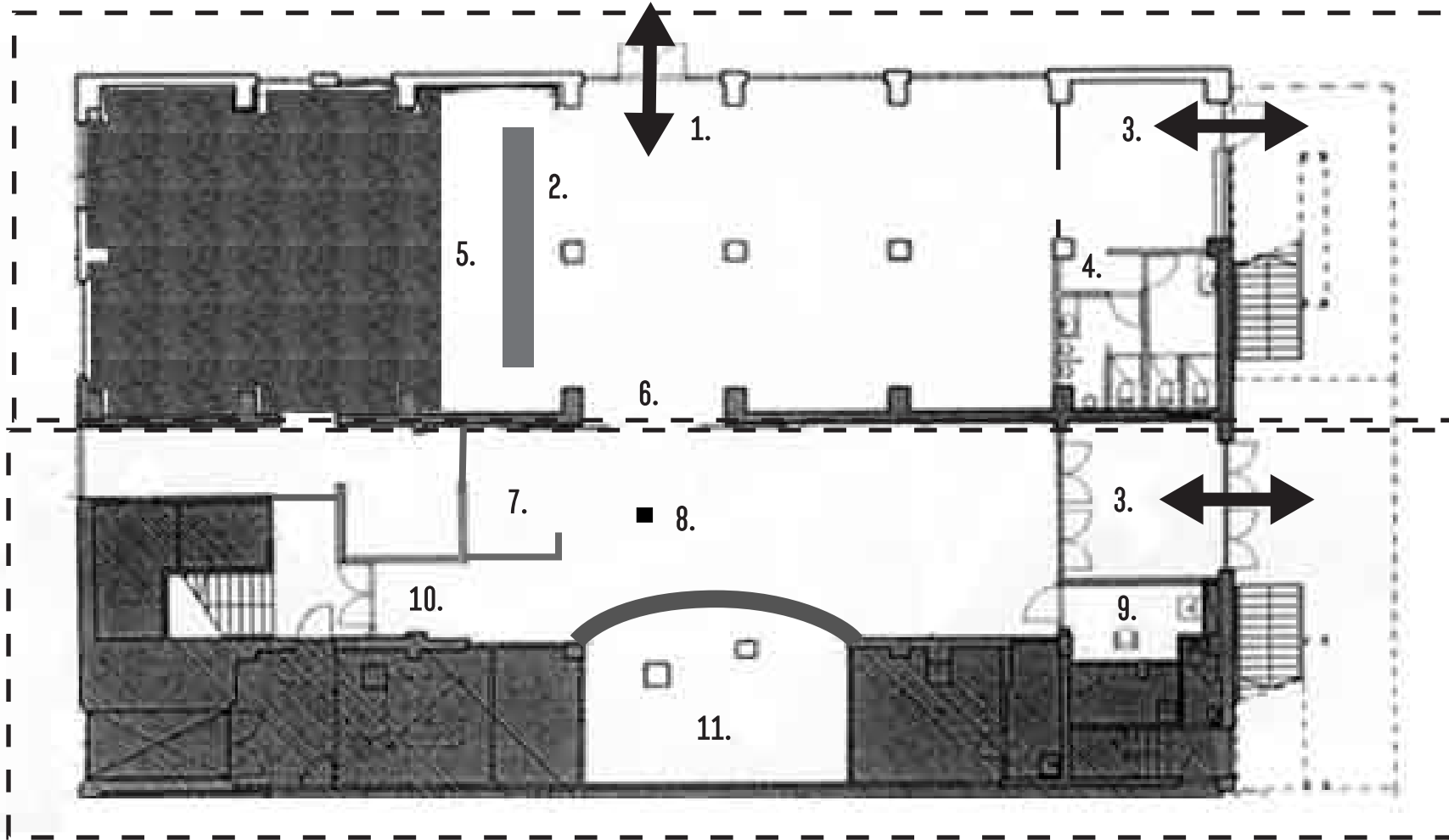


NOSTURI - AULA AND NOUSU - 1st. FLOOR



RESTAURANT - NOUSU
 APPR.120M2 - APPR. 8,5X12,5M
 MAX 120 PERS.
 TERRACE 100 PERS.

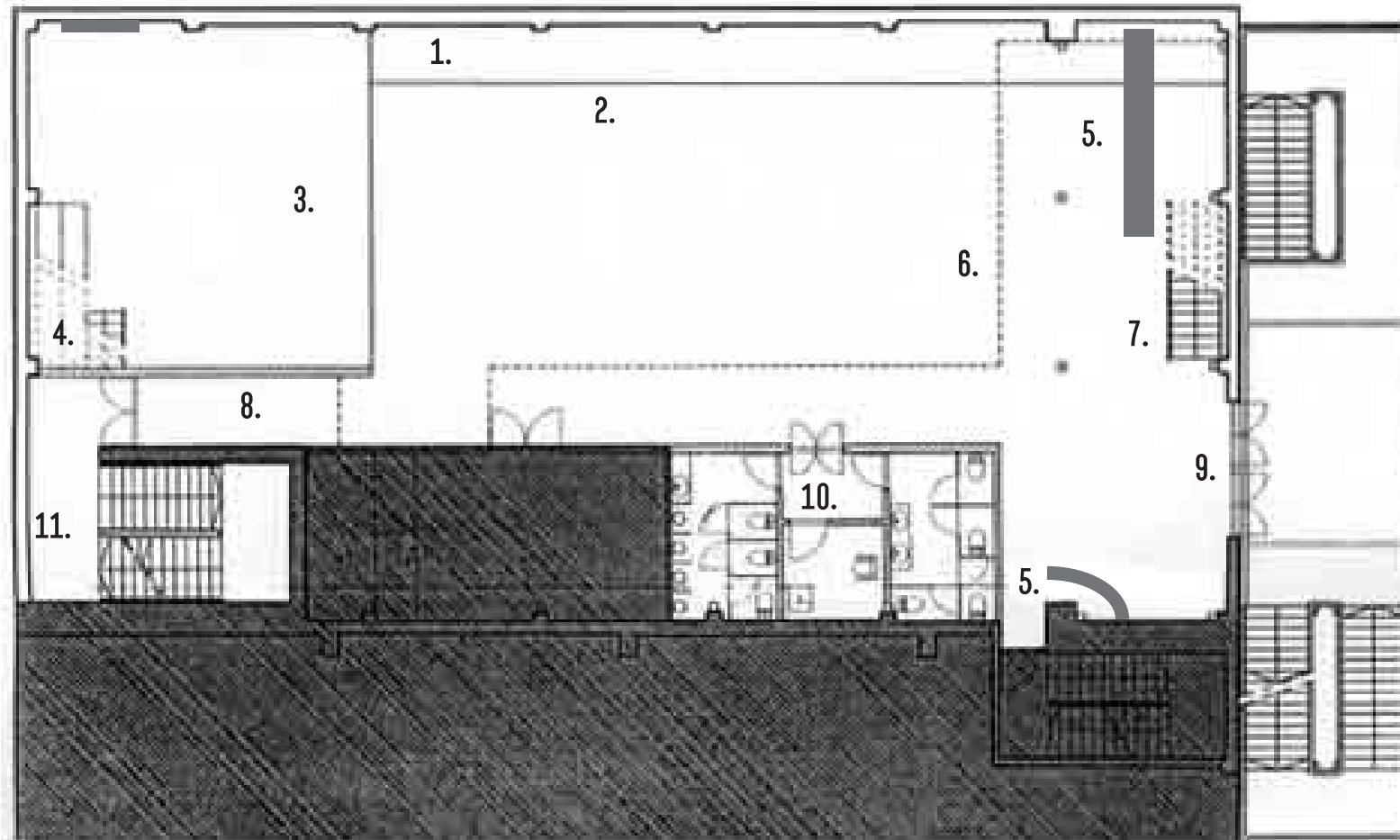
LOBBY
 APPR.70M2 - APPR. 5,5x12,5M
 MAX 80 PERS.

- 1. ENTRANCE TO TERRACE
- 2. BAR
- 3. ENTRANCE
- 4. WC
- 5. KITCHEN
- 6. SLIDING DOOR
- 7. CLOAKROOM 2
- 8. VIDEOPRJECTOR
- 9. WC
- 10. ENTRANCE TO HALL (2 1/2 and 3rd. floor)
- 11. CLOAKROOM 1



— 1m

NOSTURI - HALL - 2 and 1/2th FLOOR



APPR. 250M2 - APPR. 10X20M

1. WALL TO SEA
2. SIDE RISER (height 40cm, depth 120cm)
3. STAGE (8,20x7,20x1,20m) (w,d,h) + behind backdrop 1m
4. RAMP AND STAIRS
5. BAR
6. BALCONY LINE
7. STAIRS TO BALCONY
8. ENTRANCE TUBE
9. EMERGENCY EXIT
10. WC
11. STAIRS UP TO BALCONY AND DOWN TO LOBBY

ELECTRICITY

- 125A for lights and 125A for sound downstage left
- 2 x 32A near foh

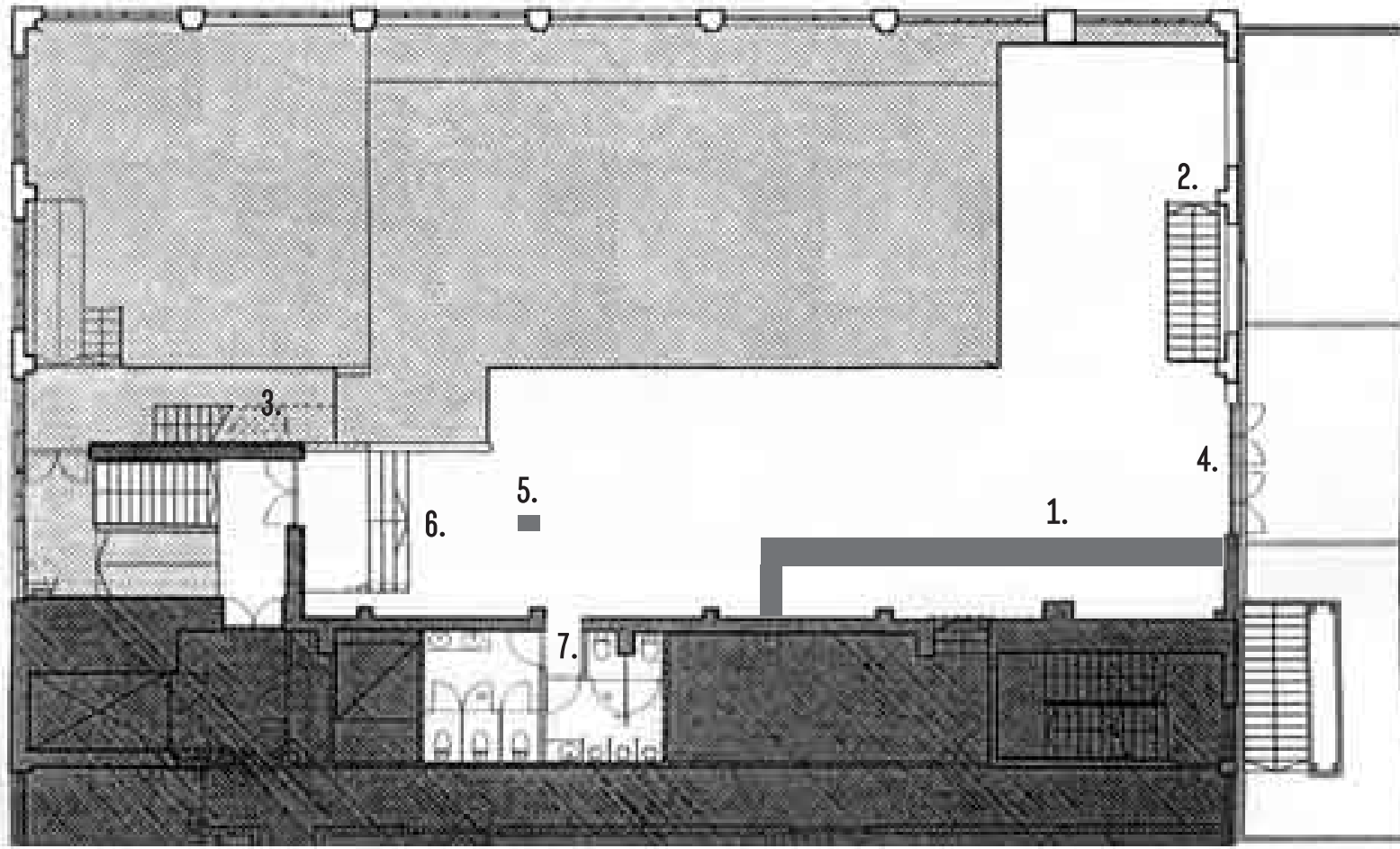
TRUSSES:

- back and sidedrops black or red
- 8m ladder with motors for backdrops
- stage truss with 4 lodestar 500kg. all trusses 12" tomcat
- sound truss 2 x 1000kg chain hoist

HEIGHTS IN DIFFERENT PLAN

— 1m

NOSTURI - BALCONY - 3rd. FLOOR



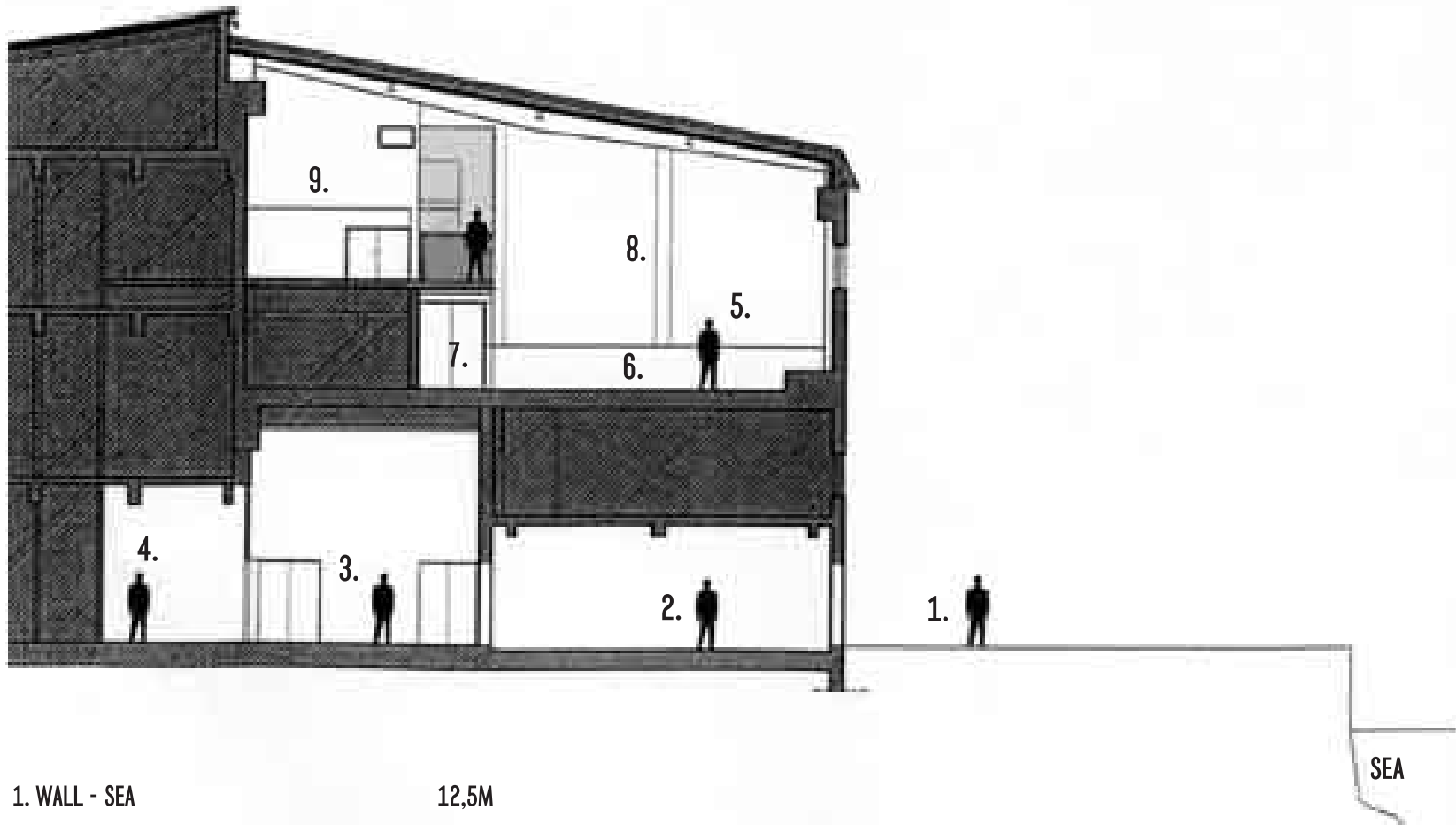
APPR. 170M² - N. 6X20 AND 5,5X8M

- 1. BAR
- 2. STAIRS TO HALL
- 3. MONITOR DECK (eidth 3.50m, depth 2,00m)
- 4. EMERGENCY EXIT
- 5. VIDEOPROJECTOR
- 6. STAIRS TO LOBBY
- 7. WC

HEIGHTS IN DIFFERENT PLAN

— 1m

NOSTURI - HEIGHTS



1. WALL - SEA	12,5M
2. RESTAURANT	3,0M
3. LOBBY	5,25M
4. CLOAKROOM	3,75M
5. HALL	5,55-6,60 M
6. STAGE	1,20M
7. UNDER THE BALCONY	2,10M
8. STAGE CLEARANCE	4M
9. BALCONY	3,90-5,10M

SEA DEPTH APPR. 12,5 METRIÄ